

Swisspearl system and products

Unlimited design solutions

**SWISS
pearl®**



Competence, excellence and innovation

Long term experience

For more than 40 years, Swisspearl's Research & Development teams have continuously expanded their unique expertise regarding fiber cement material technology, coloration and application of the whole systems. These significant technology advances are the backbone of Swiss quality. Swisspearl is the only manufacturer who masters the highly demanding production process for integrally colored shade in shade fiber cement panels offered in such a wide color variety.

Unique with long time proven quality

Swisspearl fiber cement panels are manufactured with low energy and high environment consciousness. Thus, the products are 100% environmentally friendly. Additionally, they are mainly made of local mineral raw materials. The proprietary processes pioneered by Swisspearl with special surface finish, sealed edges and back coating ensure optimal behavior and durability of the panels. This has been a proven process since the late 1950s. Furthermore, Swiss construction authorities testify to over 40 years as standard life expectancy. Millions of panels installed throughout the world prove the outstanding, reliable long term quality of the fiber cement panels and coating.

Content

Ventilated façade system		6
Fasteners		8
Advantages		12
General information ventilated façade		14
Façade	SWISSPEARL LARGO	20
	SWISSPEARL LINEARIS	22
	SWISSPEARL MODULA	24
	PERFORATIONS	28
	ENGRAVINGS	29
	PANELS COATED ON BOTH SIDES	30
	SUN SHADING ELEMENTS	31
Interior	SWISSPEARL INTERIOR	32
Roof	SWISSPEARL THE 5TH FAÇADE	34
Color families		36
General information	WARRANTY	52
There for you		53

The system, fasteners and advantages
A highly sustainable solution



6 The rear ventilation system

A highly sustainable solution

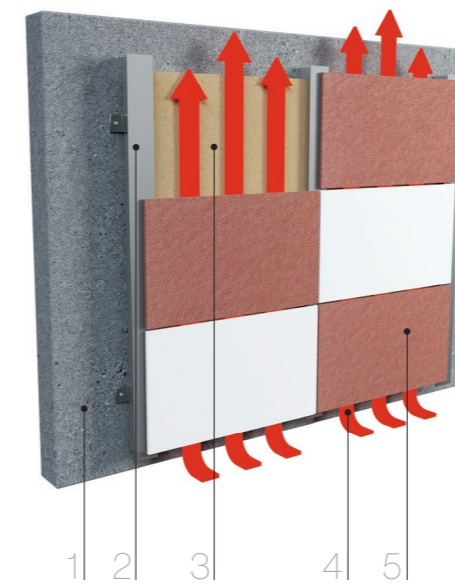
Providing considerable energy savings for any building, the environmentally friendly ventilated façade system and Swisspearl fiber cement panels are not only a good contribution to climate protection, they also offer a great opportunity to enhance the durability, appearance and value of a building.

All Swisspearl panels are specially designed for rainscreen cladding applications with rear ventilation. Combined with each other, they become the most reliable system from the technical construction viewpoint. This cladding system effectively protects the building and its structure from the elements for a long time. Furthermore, it reduces humidity and the air circulation optimizes the efficiency of insulation. Therefore, there will be no problem with mold, fungi, etc. The rot-resistant and non-combustible panels are extremely durable and virtually maintenance free – an attractive solution with many advantages.

Maximum longevity to exterior cladding

The five main components

The typical rainscreen system is based on natural rear ventilation. It is most reliable, sustainable and provides maximum longevity to exterior cladding. Ventilated façade systems consist of five main components:



- 1 Support structure
- 2 Sub frame
- 3 Thermal insulation layer
- 4 Ventilated cavity
- 5 Swisspearl Cladding

1 Support structure

The exterior wall of a building is mainly made of concrete, CMU blocks, brickwork, steel or timber frame with studs and planked by gypsum boards.

2 Sub frame

Swisspearl façade panels are installed on timber or metal supports.

3 Thermal insulation layer

The advantage of an exterior thermal insulation is to keep the entire building structure at a constant temperature and to minimize thermal bridges and thus reduce the loss of energy to a minimum. Economic as well as ecological advantages result.

4 Ventilated cavity

The main task of the air cavity is the evacuation of moisture and excess heat. The air circulation occurs naturally, thanks to the pressure difference between bottom and top.

5 Swisspearl Cladding

The outer skin of the building envelope has two main functions; to be aesthetically pleasing as well as protecting against influences from climate and environment.

8 Appearance of the cladding

Face fastened

Swisspearl façade panels are installed on timber or metal sub frame. The fastening method using face fastened screws or rivets allows an efficient attachment to the supporting structures. In fact, the fastener heads are available in exactly the same shade of colors as the panels, and are hardly visible even a slight distance away as they blend with the overall surface.

Concealed panel attachment methods

The concealed attachment has been designed for applications with the highest aesthetic standards. This high-end method of use brings out the full attractiveness of the surface finish of the Swisspearl panels.

Sigma concealed panel attachment is available for 8 and 12 mm panel thickness.

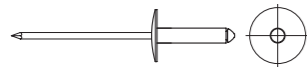
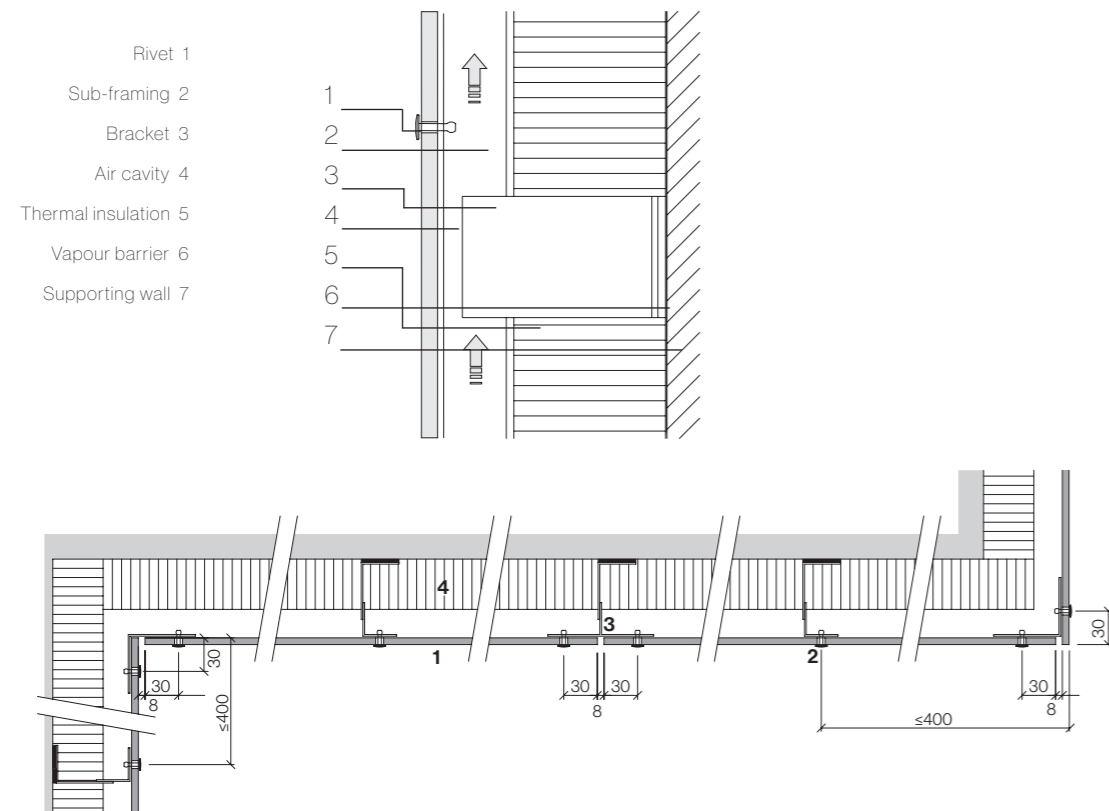
The panels are supplied by the factory or certified fabricator accurately cut to size, including anchoring points to the panel rear face. Aluminum parts are fitted to the panel on site and the panels are hung on to the appropriate supports on the sub-framing.

The sub-framing is made either out of timber battens covered by a layer of EPDM for moisture protection; or by metal, i.e. aluminum or galvanized steel.

Panels ordered for adhesive application are called ARSB and are available upon request at time of order. Standard Swisspearl panels cannot be used for adhesive application.



Metal sub frame (aluminium or galvanized steel)

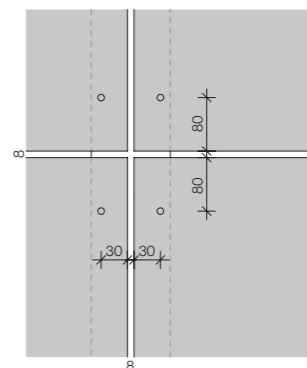
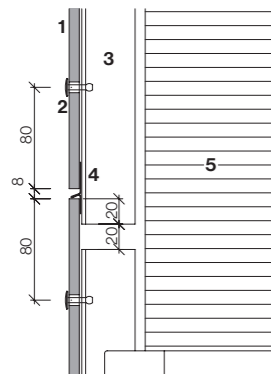


Rivets

Stainless steel or aluminum. Heads powder coated or blank. Standard type 18 mm, longer rivets for lapped cladding panels.

Hole diameters

All holes to panels for both fixed and sliding points to be of diameter 9.5 mm. All holes to sub frame for fastening the panels to be of diameter 4.1 mm.



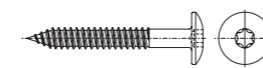
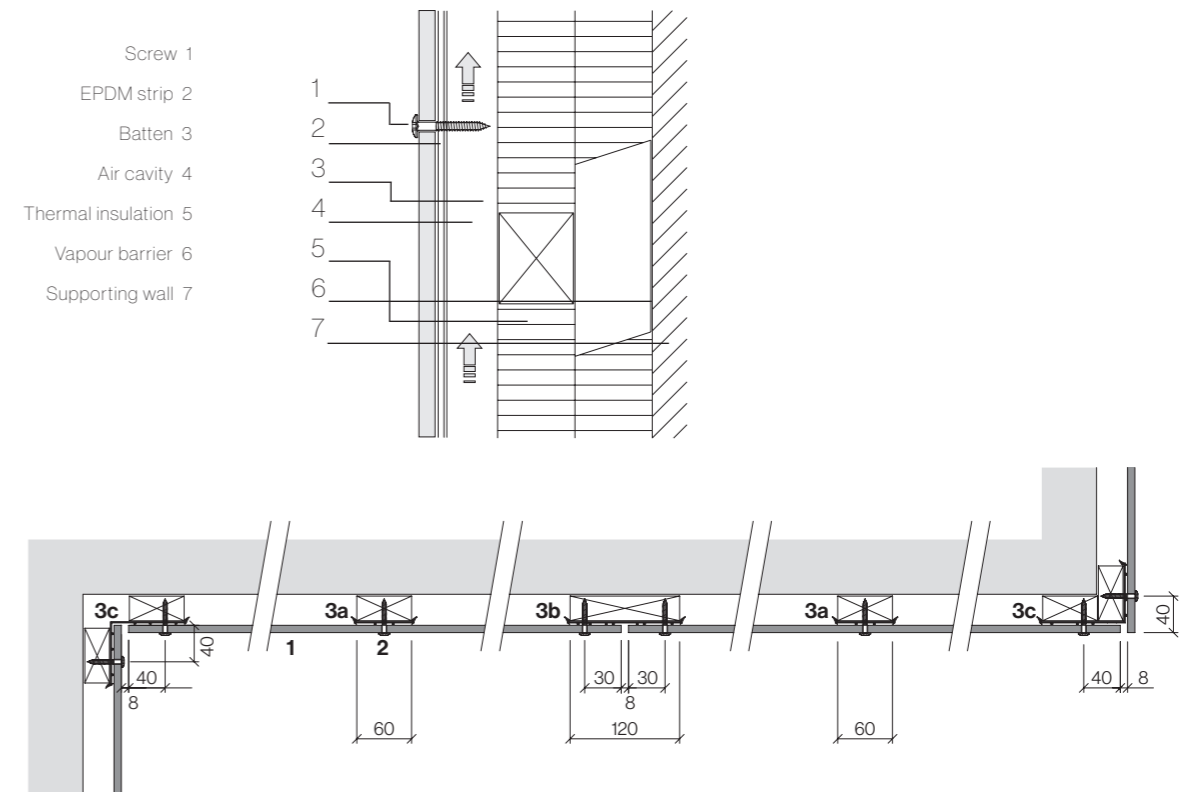
Aluminium profiles

Min. 2 mm thickness aluminum mill or anodized. Profile length about 3 m for installation story high breaks to coincide with horizontal panel joints.

Steel profiles

Steel panel supports to be min. gauge 18 (1.27 mm / 0.05") to obtain nominal pull out value. Profiles should not be longer than 6 m (20').

Timber battens

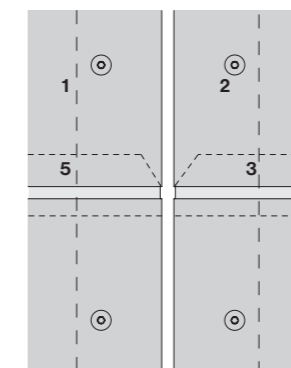
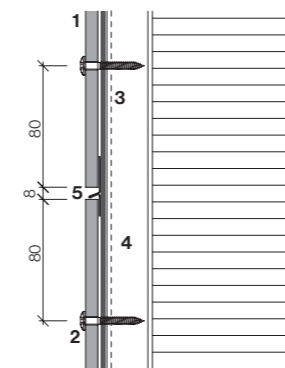


Screws / bit

Stainless steel screw, with powder coated or blank head. Standard type 4.8x38 mm, head Ø 12 mm, drive T20W.

Hole diameters

Holes to panels to be Ø 5.5 mm



Timber quality

Battens must be thickness gauged to 1 face:

- Thickness min. 27 mm (min. 3/4")
- Always use planed surface timber
- Solidity class II (FK II/C24)
- Recommended only using kiln-dried lumber
- Moisture content max. 20-%

12 Cost efficiency

Savings up to 30% over typical façade

A Swisspearl façade is a cost-efficient and extremely economical building envelope which retains its value very well; thanks to its excellent characteristics such as easy assembly at all weather conditions, long life, functional reliability and being almost maintenance-free.

Swisspearl ventilated façades have proved in severe climates to be very energy efficient and cost effective over the long term. They also ensure a longer life expectancy for the building structure and the building envelope with low-cost maintenance.



Energy efficiency

Swisspearl façades are ideally suited for energy efficient construction concept. Sophisticated construction with long-lasting weather protection offers distinct, long-lasting energy efficiency.



Durability and maintenance

Rear ventilated claddings are virtually maintenance free. Costs for repainting, recaulking and repairing regularly is therefor eliminated. The longevity of Swisspearl cladding panels makes the economic advantage of the product obvious.



Sustainable and efficient

Outstanding features such as durability, functional reliability, maintenance free upkeep, and simple installation make Swisspearl façades an especially cost-effective, efficient, and high value building envelope starting from day one. The sustainability of Swisspearl products is proven by EPDs (Environmental Product Declarations).

One system

Many advantages

Rear ventilated cladding, often referred to as rainscreen cladding, in combination with the use of a thermal insulation on the outside of the exterior wall, generate numerous advantages as follows:



Long-lasting reliability

Unrivaled everlasting Swisspearl slates offer optimal protection of the façade construction against all manner of weather or outside influences, thus guaranteeing a long-lasting, reliable building envelope for decades.



Fireproof

Swisspearl panels are composed of mineral and thus non combustible according to ASTM E-136. They have outstanding fire protection properties. A feature that offers the necessary safety even for especially compact structures.



Moisture protection

No condensation and mildew on the walls. The back ventilation space allows diffused water vapor inside the building to escape to the outside in a controlled manner.



Optimized comfort

The special structural-physical properties of the Swisspearl façade system maintain an ideal, healthy environment in the building all year round. While the insulation placed throughout keeps the cold out of the living space, natural air circulation in the back ventilation space prevents heat transfer to the interior in the summer and keeps the living space pleasantly cool.



Flawless

The exterior of every façade is subject to extreme temperature fluctuations. The Swisspearl façade system allows for unhampered dilation of the exterior mounted siding. Therefor, you don't have to worry about extensive repair work to fix cracks in the plaster or flaking due to frost on the exterior.



Architecturally inspiring

Swisspearl uniquely combines functionality with a strong aesthetic power of expression. Its unique material features, combined with the variety of forms and colors opens up virtually boundless realms of possibility for the design of first-class façades.



Ecological from A to Z

Minimal energy required for production and its long service life make Swisspearl panels the embodiment of sustainability in construction, even in comparison to wood. The layers of the Swisspearl façade system are also separable, making it easy to dismantle.

14 General information ventilated façade

Façade engineering

Façade engineering is to be carried out by a locally licensed engineer based on the data supplied by Swisspearl (panel and fastening data, wind load tables) and based on the applicable local standards and regulations.

Sub frame/panel support

The panels are supplied including the fasteners but without the support profiles. This leaves the great advantage of flexibility for the project. For example:

- Verticals in metal or timber attached to horizontal Z
- Double threaded spacer screws for timber battens, adjustable in/out
- Aluminum bracket (fixed/sliding)
- Aluminum verticals adjustable in/out
- Timber sub frame made of horizontal and vertical layer
- Verticals in metal or timber to horizontal angle adjustable in/out



Swisspearl products
Unlimited design solutions





LARGO

Swisspearl Largo
large size panels
Freedom of design without
limits



LINEARIS

Swisspearl Linearis
slat panels
Elegant and light



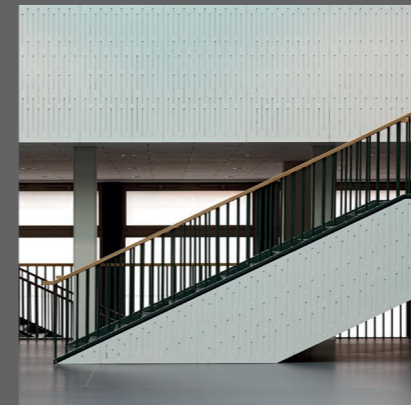
MODULA

Swisspearl Modula
overlap panels
Medium-size format for
high-end architecture



CUSTOMIZED

Customized panels
Be creative



INTERIOR

Swisspearl interior
Moving from the outside to
the interior



5TH FAÇADE

Swisspearl the 5th façade
A clear language to express
architectonic visions



Swisspearl Largo

Freedom of design without limits

The large-format Swisspearl Largo panels give façades what they need: a face, individuality, character, texture, color, and most important, a highly effective protective layer. Swisspearl Largo allows an immense range of possibilities for the design of façades, with an extensive selection of surface options, various types of joints, fastenings, and panel formats that can be freely selected within the maximum useable size. For visible creativity and to meet the highest aesthetic requirements, in proven Swisspearl quality.



Info

Panel size

Arbitrary panel size up to a maximum size of 3050 x 1250mm, thickness 8mm and 12mm

Colors

A wide range of more than 70 colors and additional custom colors

Installation

The whole range from flat layer to lapped coverings, with face or concealed fastening

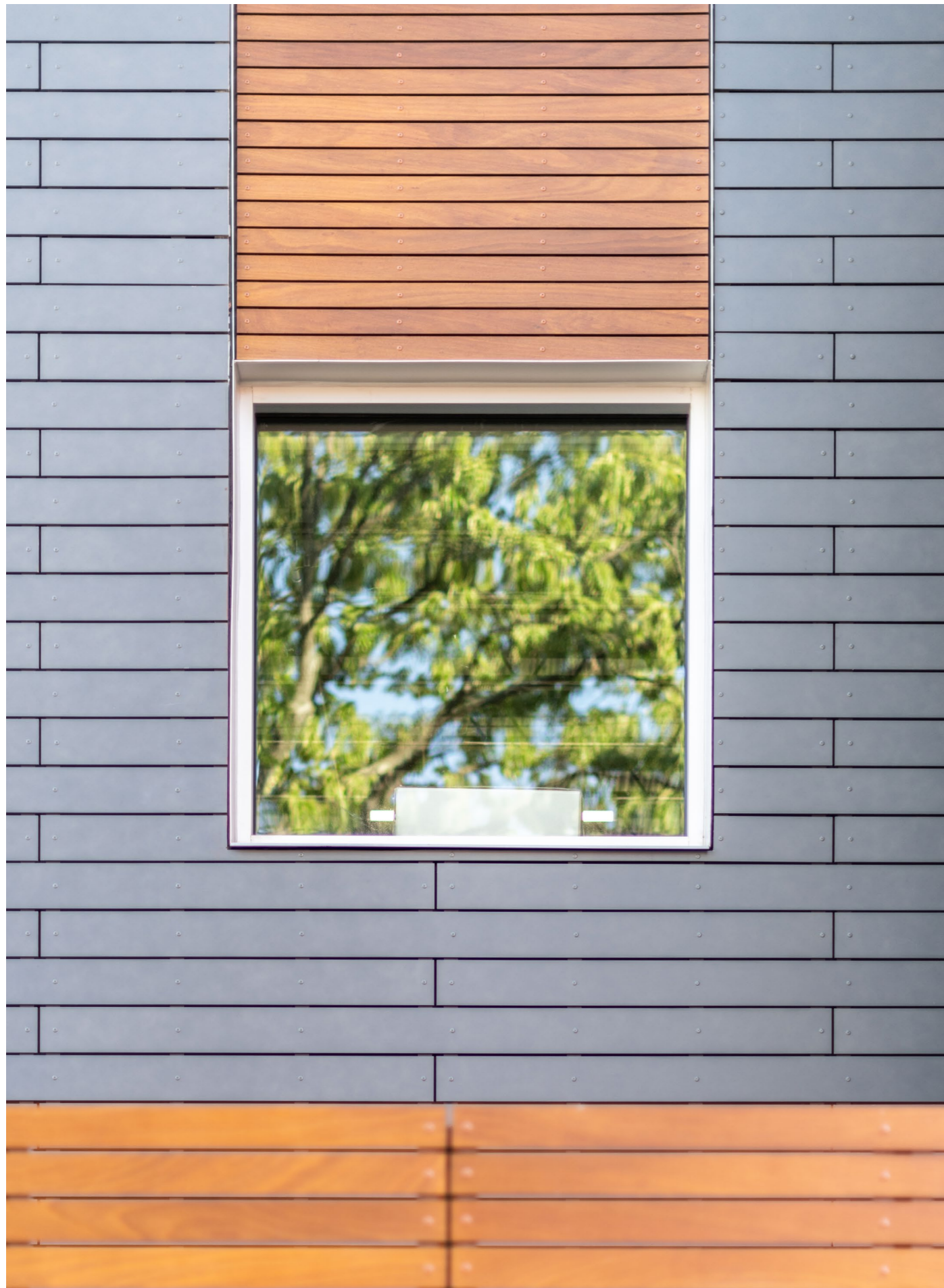
Detailed information please refer to our delivery program



Swisspearl Linearis

Elegant and light

Linearis are ready-made Swisspearl Largo panel strips, for installing with open joints. Whether monochrome or multicolored, equal or varying format lengths, with continuous or offset joints – there an immense scope for different combinations. The low consumption of resources and energy for their manufacture, and their long working life, make Linearis, like all Swisspearl products, the epitome of sustainable construction.



Info

Panel size

4 different panel sizes, thickness 8mm

Colors

A wide range of more than 60 colors

Installation

Easy installation with open joints, panels attached by rivets or screws

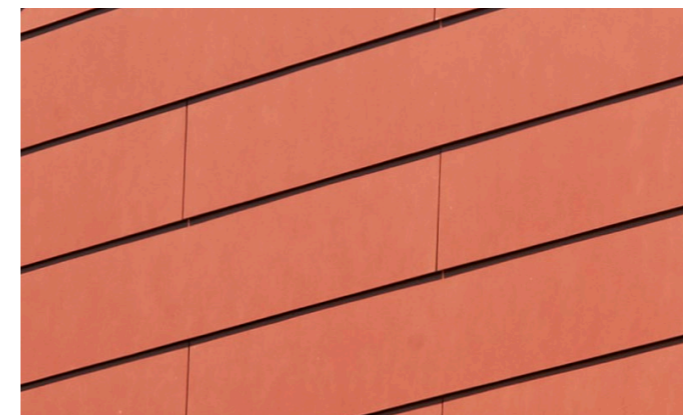
Detailed information please refer to our delivery program

Swisspearl Modula

Medium-size format for high-end architecture

The horizontal Modula structure has a fine architectonic rhythm. The slim panels, available in two different lengths, are installed as lapped coverings and can be arranged both with continuous and with offset vertical joints. A large number of different surfaces and colors enable numerous additional design variants.

Whether monochrome or multicolored, equal or varying format lengths, with continuous or offset joints – Modula provides an immense scope for individual combinations.



Info

Panel size

2 different panel sizes, thickness 8mm

Colors

A wide range of more than 60 colors

Installation

Installation of the modules with continuous or offset vertical joints is possible

Detailed information please refer to our delivery program

26 Customized panels

Be creative

The designing possibilities offered by the wide range of finishes and colors may be complemented with special fabrication or surface treatments. These additional options allow an exclusive, special touch to be given to every high profile building.

The various Swisspearl specialties rest on the integrally colored panel platform. Panels with perforations, engravings or other surface treatments are provided with an outstanding finish. They may be used individually or in combination with other Swisspearl panels in the same shade, different shade or with other materials.



28 Perforations

Designing possibilities with functionality

Holes, slots and other shaped perforations allow the creation of unusual effects. Perforated panels may have a function (sliding shutters, lighting concepts, windscreens, separation, sound absorption, etc.) or be purely decorative. Each perforation project needs to be checked by our technical advisors. As a guideline, the surface of perforations may be up to 18%.

Perforated panels are not available in HR finish nor Avera, Incora and Texial.



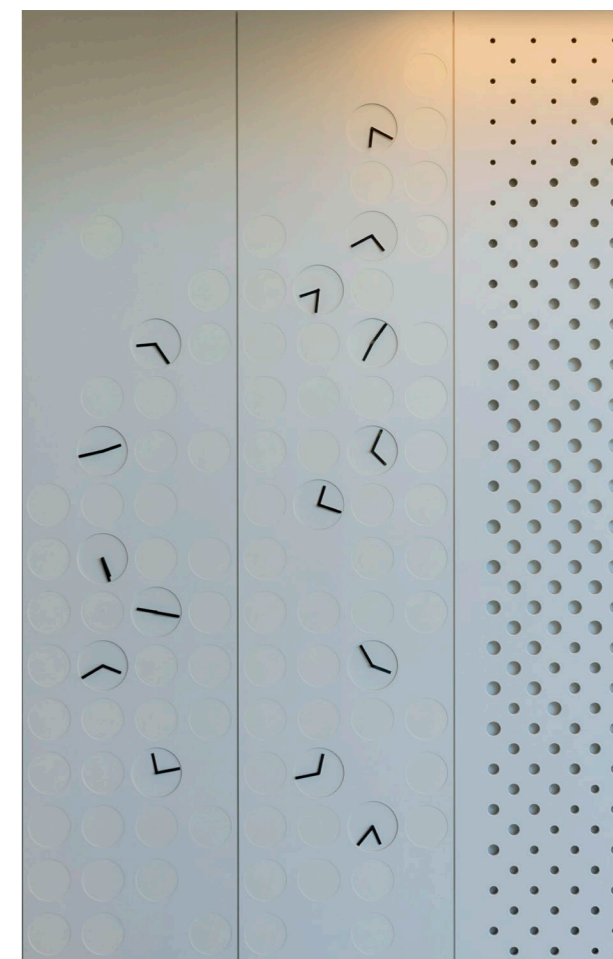
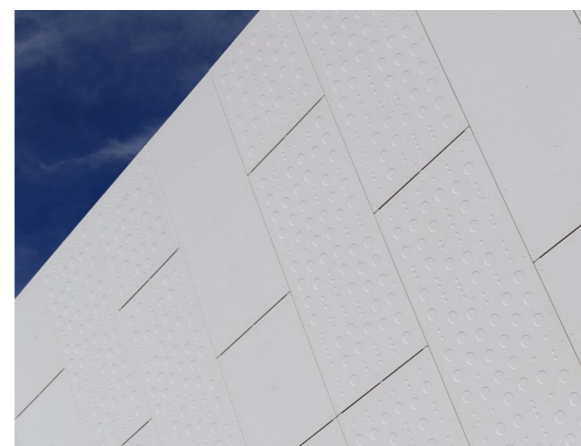
Left: Davis-Harrington Welcome Center, Springfield, USA. Architect: Dake Wells Architecture, Springfield, USA. Photographer: Gayle Babcock, Springfield, USA.
Right Above: Hotel Balnea, Dolenjske Toplice, Slovenia. Architect: D & K Arhitekti d.o.o., Ljubljana, Slovenia. Photographer: Miran Kambič, Radovljica, Slovenia.
Right Bottom: Bus Station, Velenje, Slovenia. Architect: Gužić Trplan Arhitekti d.o.o., Ljubljana, Slovenia. Photographer: Sandro Lendler, Zagreb, Croatia.

Engravings

To impress

Geometric designs, unique custom patterns, company logo, etc., the creative possibilities are unlimited. Engravings may be within a panel, change from one panel to the other or run over several panels to create a bigger pattern. The structural feasibility of each intended pattern needs to be checked. As a guideline, the depth of engravings is 1.5 mm (panel 8 mm thickness) or up to 4.0 mm (panel 12 mm thickness).

Engraved panels are not available in HR finish nor Avera, Incora and Texial.



Left: Davis-Harrington Welcome Center, Springfield, USA. Architect: Dake Wells Architecture, Springfield, USA. Photographer: Gayle Babcock, Springfield, USA.
Left Bottom: ITMS Telemedicina do Brasil, Sao Paulo, Brazil. Architect: Mauricio Karam, Sao Paulo, Brazil. Photographer: Mauricio Karam, Sao Paulo, Brazil.
Right: SAP Lobby, Budapest, Hungary. Architect: Vikár és Lukács Építészstúdió kft., Budapest, Hungary. Photographer: Bujnovszky Tamás, Budapest, Hungary.

30 Panels coated on both sides

Twice the look

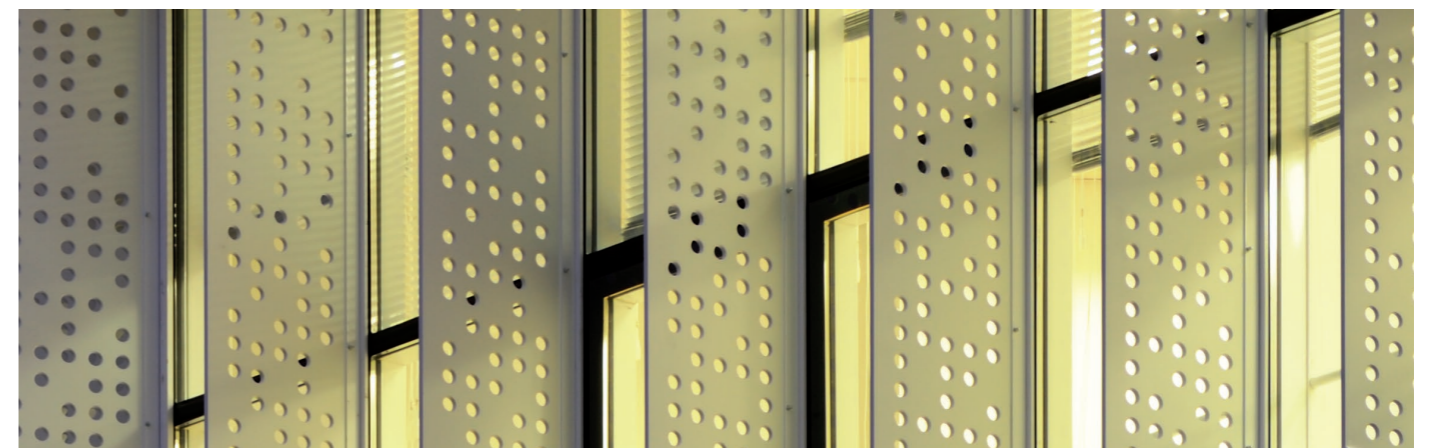
Any panel may be finished on both sides. Typical applications are panels for balconies or balustrades (minimum thickness: 12 mm), partition walls visible on both sides, sliding shutters, etc.



31 Sun shading elements

Break the light

Additional customized treatment such as perforation is of course also possible for sun shading elements. With these functional and aesthetic elements heat buildup in sun exposed rooms can be reduced allowing significant reduction in energy costs for cooling needs.



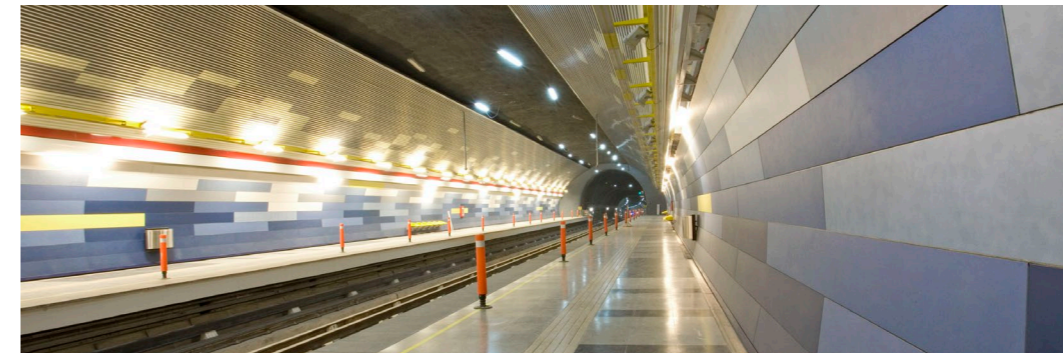


Swisspearl interior

Inspiring freedom of design

Whether it is for cladding interior walls or ceilings, Swisspearl panels lend a fascinating quality and atmosphere to the room that is being designed, in a surprising new way. The fiber cement material with its delicate surface texture and most of them with the carefully matched full-body color, lend the Swisspearl panels an unmistakable uniqueness, with their pleasant natural appearance and surface feel. What is more, their beneficial physical properties mean that they are extremely tough, durable and fire-resistant, so they are long-lasting, reliable and problem-free.

Swisspearl panels are also suitable to enhance room acoustics. Made of inert material, perforated Swisspearl panels are sound absorbent to approx. 10 decibels. Coefficient sound absorption can be improved by using sound absorbing mats.



Info

Panel size

Arbitrary panel size up to a maximum size of 3050 x 1250mm, thickness 8mm and 12mm

Colors

A wide range of more than 70 colors and additional custom colors

Installation

The whole range from flat layer to lapped coverings, with face or concealed fastening

Detailed information please refer to our delivery program



Swisspearl the 5th façade

A clear language to express architectonic visions

Leave the conventional behind and strike out new paths. Swisspearl invites you to experiment with space form, surfaces, and develop creative solutions, without compromising the functional reliability in any way. The large-format roof panels with their proven Swisspearl quality will add character to roofs with a slope of just 6 (10.5%) degrees or more, and provide an exciting visual effect even when viewed from a distance.



Info

Panel size

2 panel sizes, thickness 8mm

Colors

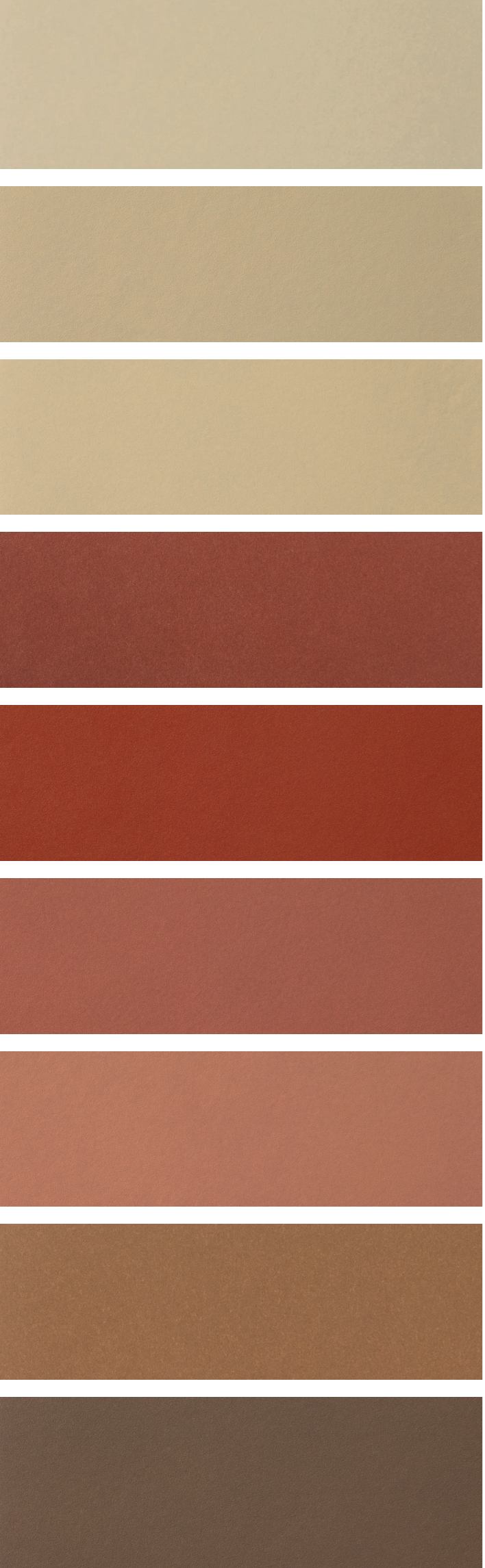
10 different Carat R-Colors

Detailed information please refer to our delivery program

Swisspearl color families

Uniqueness and diversity





Sahara 7000

Sahara 7001

Sahara 7002

Coral 7030

Coral 7031

Coral 7032

Coral 7033

Topaz 7070

Topaz 7071

Swisspearl color families

Uniqueness and diversity

The various color families allow the unique character of the Swisspearl panels to be expressed in an almost endless diversity. The carefully chosen full-body color and color finishes, each in their own way, emphasize the unmistakable aesthetics of the material, and combine material and color to form a single whole.



CARAT

Base panel: Integrally colored
Top layer: Translucent lightly pigmented
Standard colors: 27

Carat panels are integrally colored with a transparent lightly pigmented acrylic top finish shade in shade. The unique natural look and the timeless beauty of the monolithic material with its delicate vein texture provide an exciting and noble expression to every building.

Topaz 7073

Amber 7080

Amber 7082

Onyx 7090

Onyx 7091

Onyx 7099

Agate 7219

Sapphire 7060

Sapphire 7061





Crystal 7010
Jade 7050
Jade 7052
Azurite 7040
Azurite 7041
Black Opal 7020
Black Opal 7021
Black Opal 7024
Black Opal 7025

CARAT F-COLOR

Base panel: Integrally colored
Top layer: Opaque
Standard colors: 27

Providing a slightly unsmooth surface, the thicker coating with opaque pigmentation of this acrylic finish allows vibrant colors. It also provides an increased protection against weathering and UV radiation. Available on request in all standard Carat colors and as custom shades.

CARAT HR

Base panel: Integrally colored
Top layer: Translucent lightly pigmented
Standard colors: 27

This special surface treatment offers an increased scratch resistance and a higher UV resistance. Furthermore, most graffiti can be removed using acetone. Generally the aspect resembles the Carat finish, whereas HR panels have a slight sheen to the surface. Carat and HR panels can be used on the same elevation, possibly with a separation between them.

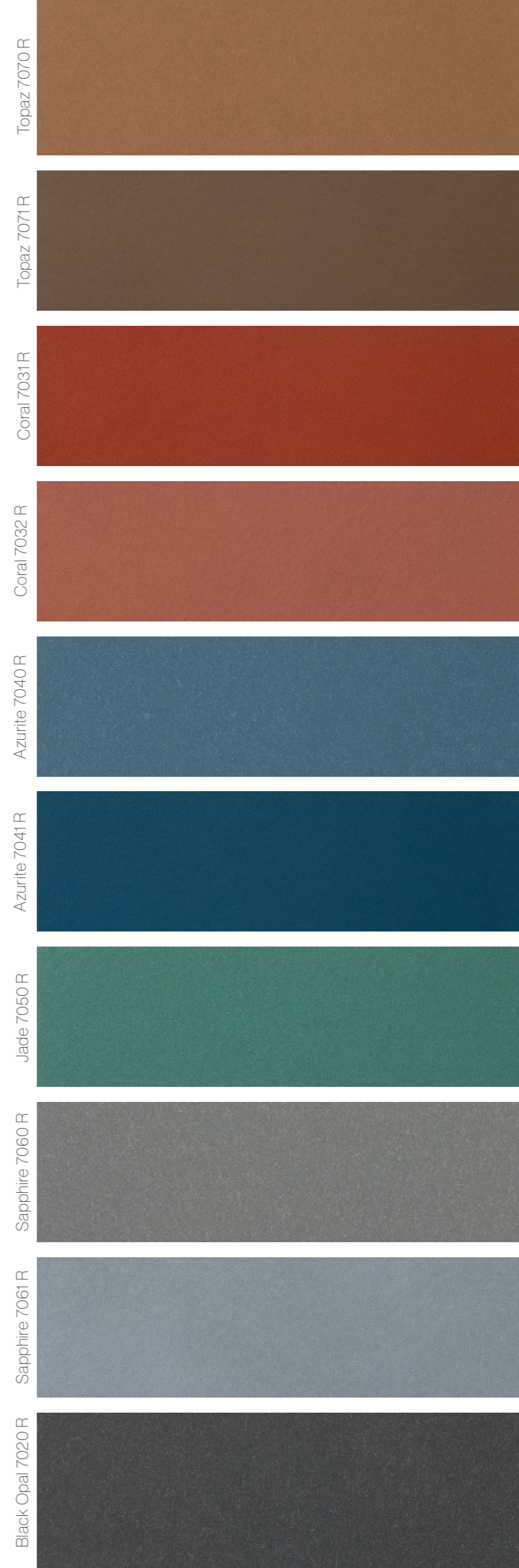
CARAT R-COLOR

Base panel: Integrally colored
Top layer: Opaque
Standard colors: 10

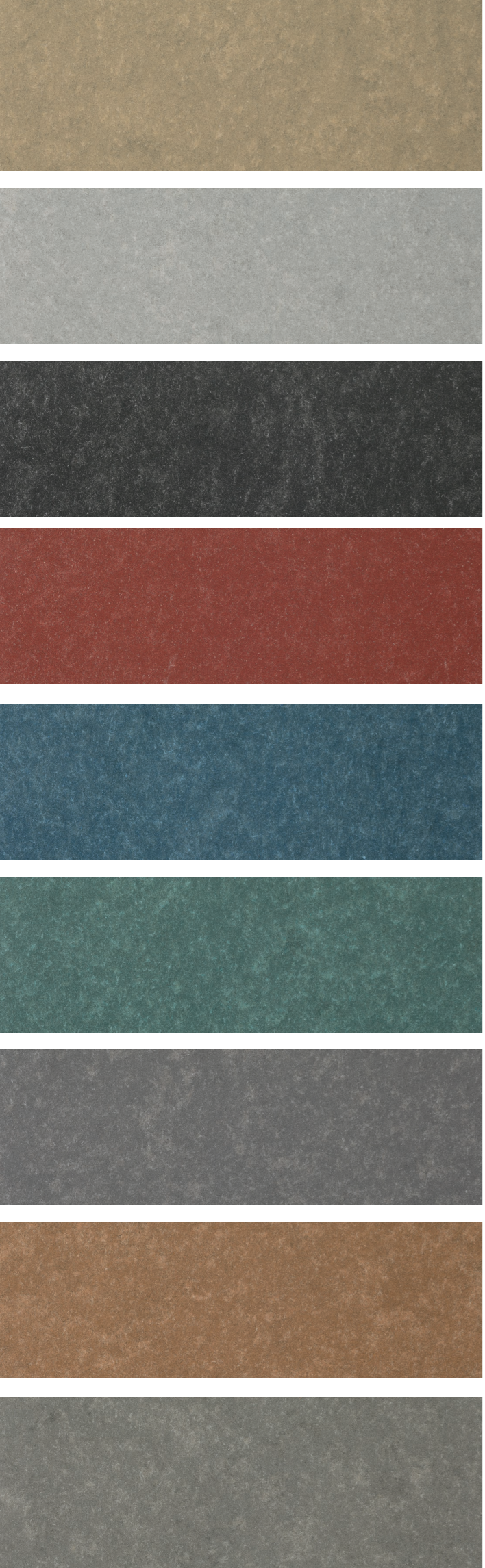
Carat R-Color panels are integrally colored. The special coating with opaque pigmentation of this finish allows vibrant colors. It also provides an increased protection against weathering and UV radiation as well as a slightly textured surface.



Multi family house, Küsnacht, Switzerland. Architect: Rossetti + Wyss Architekten AG, Zurich, Switzerland. Photographer: Jürg Zimmermann, Zurich, Switzerland.



Topaz 7070 R
Topaz 7071 R
Coral 7031 R
Coral 7032 R
Azurite 7040 R
Azurite 7041 R
Jade 7050 R
Sapphire 7060 R
Sapphire 7061 R
Black Opal 7020 R

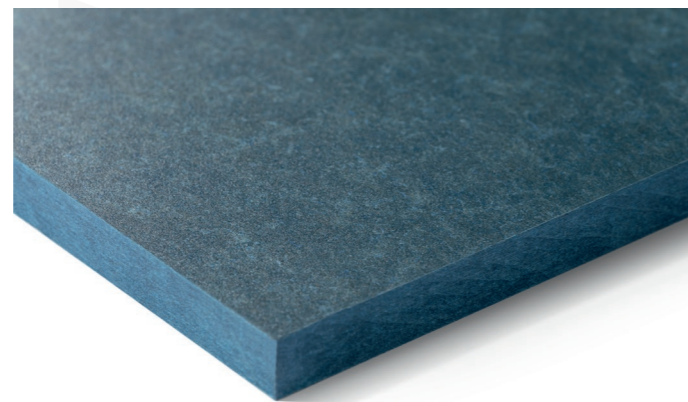


AV 000
AV 010
AV 020
AV 030
AV 040
AV 050
AV 060
AV 070
AV 100

AVERA

Base panel: Integrally colored
Top layer: Translucent
Standard colors: 9

Avera are solid-colored fiber cement panels with a vibrant texture never seen before. The unique look is characterized by the specifically coordinated dynamic manufacturing process. The resulting natural variation in color tonality and perspective even between the panels expressively emphasizes the authenticity of the material. Avera gives a façade a unique vibrancy. A high-quality invisible coating provides the Avera panels with years of protection from weather effects which lets the original look and texture shine through. The special coating also shows strong scratch resistance and offers lasting defense against most graffiti.

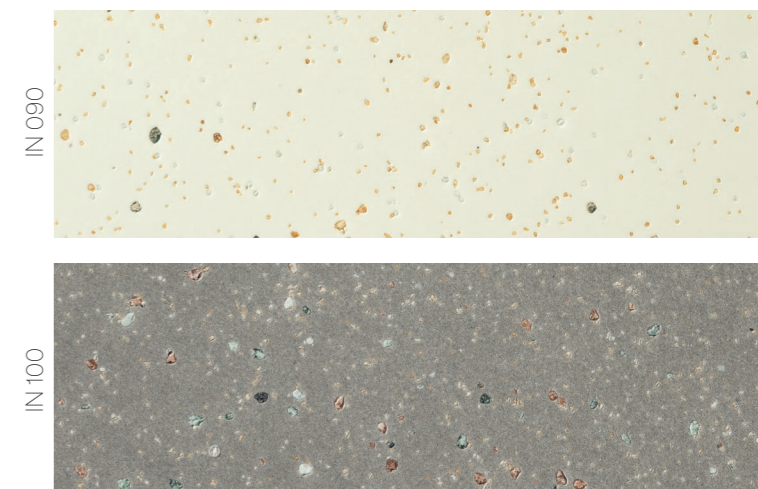


INCORA

Base panel: Integrally colored
Top layer: Translucent
Standard colors: 2

The innovative Incora façade panel stands out through a vivid spreading pattern, generated through granulated marble.

Differences in the textural appearance and color tone between the individual panels are a natural aspect of the Incora product characteristics and also highlight the vibrancy of the material expressiveness of the façade.



IN 090
IN 100



TE 113



TE 212



TE 215



TE 216

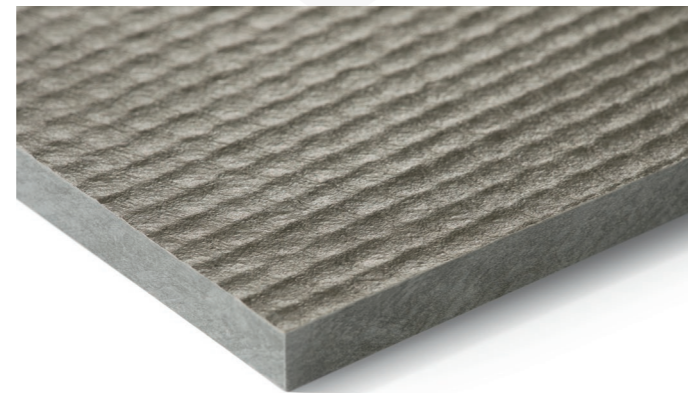


TE 811

TEXIAL

Base panel: Integrally colored
 Top layer: Translucent lightly pigmented
 Standard colors: 5

The fine surface structure gives the appearance of a fabric and is always one of a kind because it is embossed by hand.



TEXIAL – the latest Swisspearl innovation

Innovative and sustainable products made of natural raw materials, such as the new Swisspearl Largo façade panel Texial, are born of ingenuity and expertise. Delicate nuances of color and the raw texture that is the result of the mechanical embossing process highlight the authenticity of the work.

A vibrant interplay of light and shadow creates a dynamic effect, making the façades appear almost like a piece of cloth. Texial is available in five colors. While the earth tones blend seamlessly into their environment, at the same time they also make an impact because of their timeless nature. The natural, harmonic color spectrum underlines the character of Texial.





Silver 9000

Platinum 9020

Black Velvet 9221

Dark Silver 9222

Crimson 9231

Cobalt Blue 9241

Autumn Leaves 9270

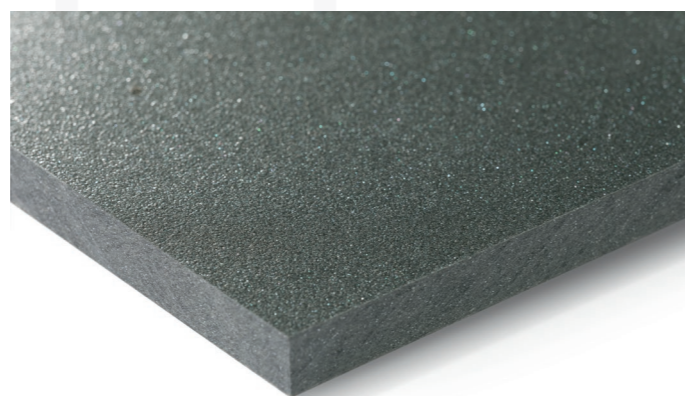
Mystic Brown 9271

Gold 9272

REFLEX

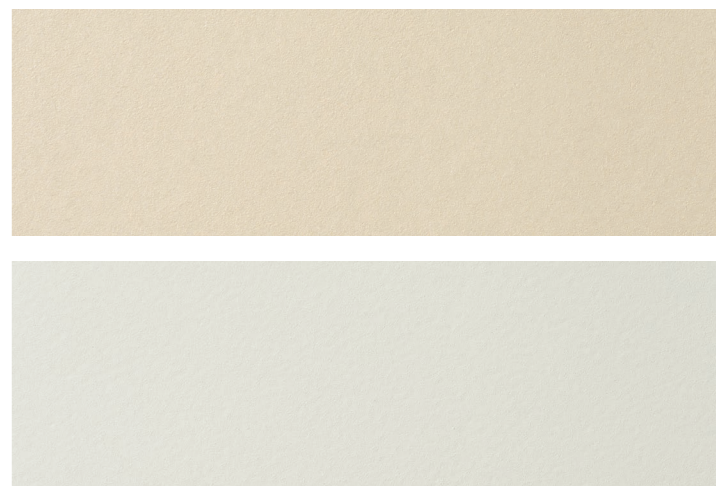
Base panel: Integrally colored
Top layer: Iridescent
Standard colors: 11

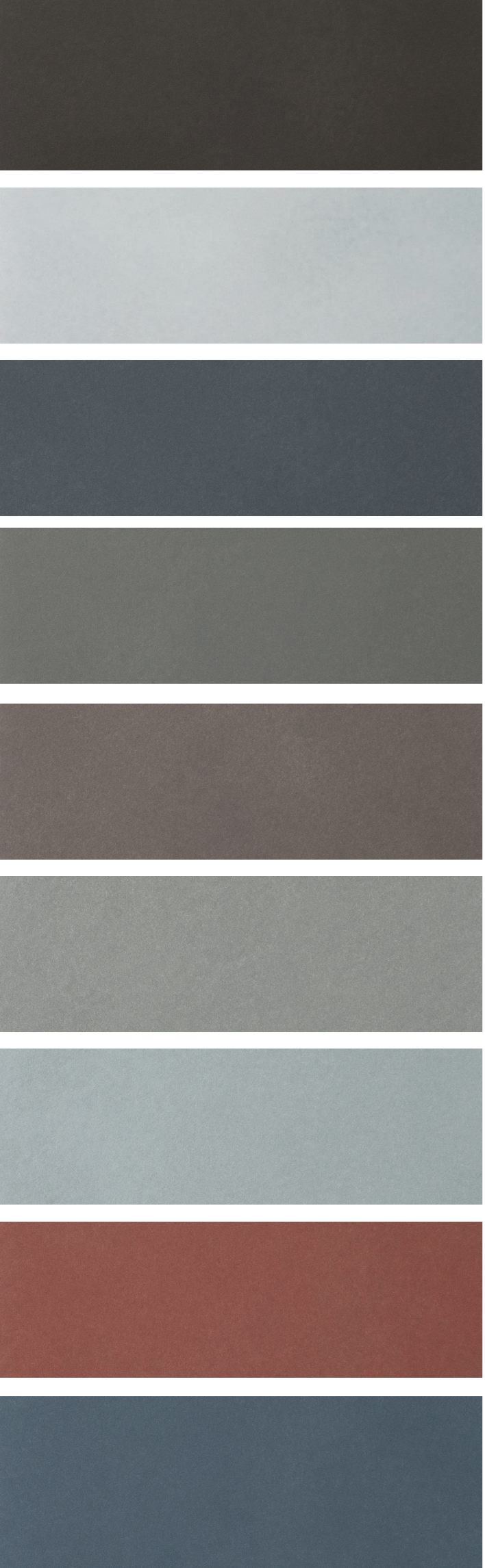
These panels are directional, mostly integrally colored and have an iridescent surface coating which is purely acrylic. Changing lighting and angles of vision produce amazing nuances in color shades. It is important when cutting and installing the panels that you maintain the same direction.



Champagne 9290

Satin White 9291





Black N 012

White N 112

Grey N 211

Grey N 212

Grey N 213

Grey N 214

Grey N 215

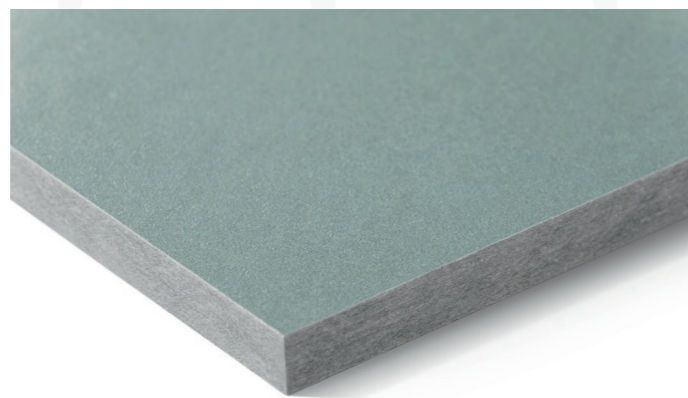
Red N 312

Blue N 411

NOBILIS

Base panel: Grey based
Top layer: Translucent lightly pigmented
Standard colors: 16

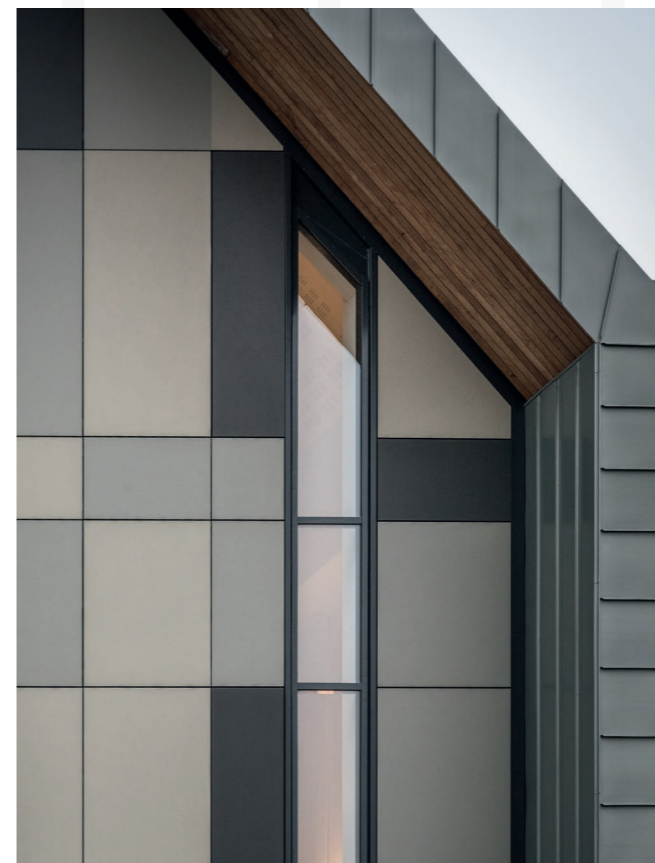
The semi-translucent surface coating on a pure acrylic basis provides the classic fiber cement appeal with much visual depth to it.



NOBILIS HR

Base panel: Grey based
Top layer: Translucent lightly pigmented
Standard colors: 16

This special surface treatment offers an increased scratch resistance and a higher UV resistance. Furthermore, most graffiti can be removed using acetone. Generally the aspect resembles the Nobilis finish, whereas HR panels have a slight sheen to the surface. Nobilis and HR panels can be used on the same elevation, if possible with a separation between them.



Green N 511

Green N 513

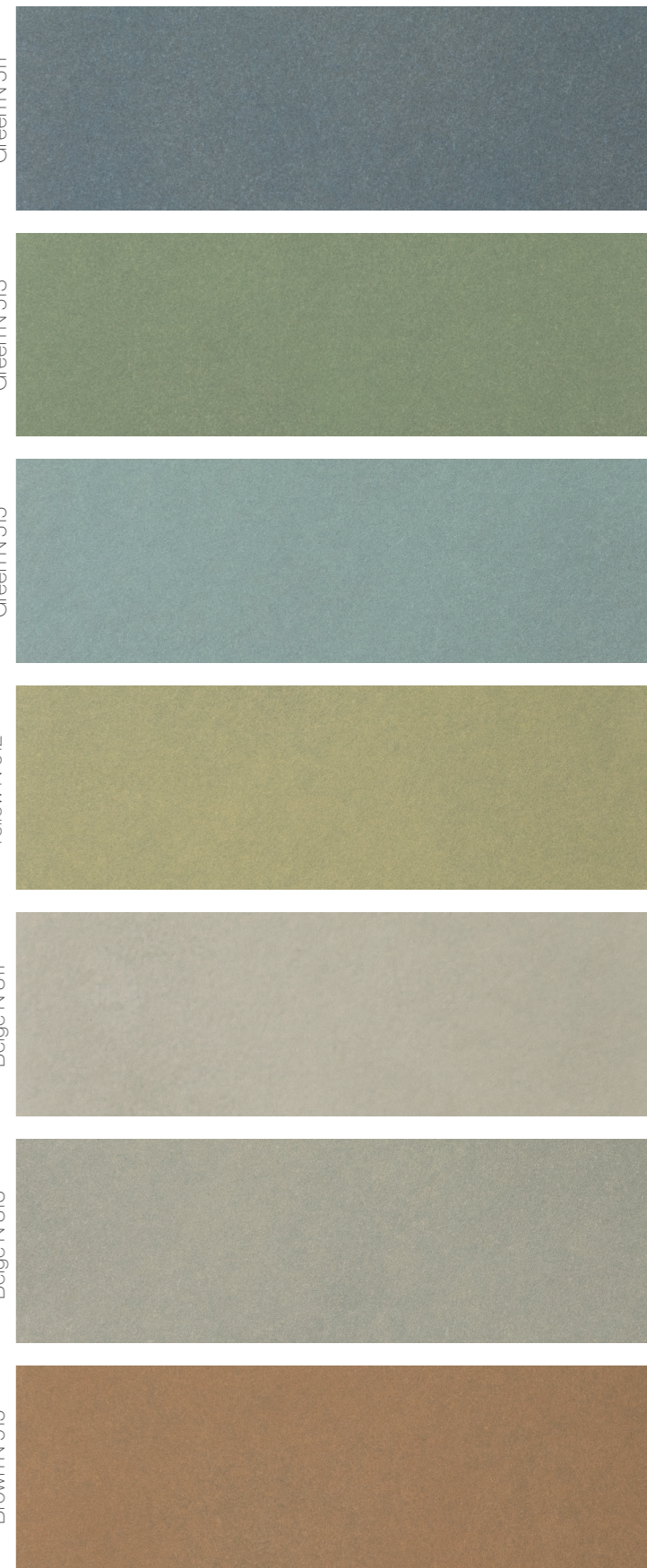
Green N 515

Yellow N 612

Beige N 811

Beige N 813

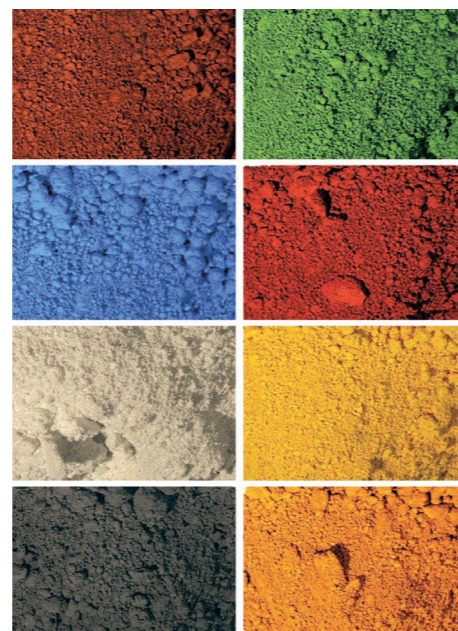
Brown N 915



50 Customized colors

Create your own color

You want to create your own color for the façade or the roof? No problem! Swisspearl has an unmatched competence and knowledge regarding special colors. Thousands of customized colors were supplied according to architects' specification.



52 General information

Product warranty

The products are manufactured to highest standards and under permanent quality control programs by third party testing facilities as well as by the factory's own laboratories.

In case that any delivered product should not reach its specified performance, there will be a 20 year warranty covering the functional quality of panels and accessories. The warranty is granted on condition that the latest Design and Installation Manual has been fully complied with.

Properties of the material

The printed colors may differ from the original shade of the color. To see the exact color, and when matching up colors on adjacent parts of a building, one must use the original panel samples.

The natural ingredients used in the fiber cement panels will to some extent determine the unique character of the material. The intensity and color tone may vary slightly depending on the production batch.



There for you

Contact us

Swisspearl's comprehensive offering of services and advice allows it to respond to the different needs of builders, façade builders, roofers, architects and planners in order to jointly develop informed solutions. Sharing knowledge plays a key role here. That is also why we have partnered up with exclusive Distributors to serve the market better.

Furthermore, Swisspearl supports its customers with comprehensive specialist advice, detailed documentation, technical manuals and its customer magazine, which has become a renowned publication for planners and architects.

Please do not hesitate to contact us. One of our dedicated and knowledgeable staff will be happy to provide you with help and advice.

We look forward to helping you out.



The internationally distributed magazine Swisspearl Architecture sets Swisspearl fiber cement products within a contemporary architectural context.



Subscribe to our **Swisspearl Architecture** magazine.



TARTU ÜLIKOOLI KLIINIKUM

Swisspearl

CH-8867 Niederurnen

T: +41 55 617 11 60

info@swisspearl.com

www.swisspearl.com

Member of the
Swisspearl Group

